

NEOGENESIS CENTRIFUGE SERIES

‘Smart’ Centrifuge for PRP & Various Cell Therapies



10/15/30cc Rotor | 4,000 RPM | 400ml Capacity

Table of Contents

1. Intro.....	3
2. Strength.....	4
3. Models.....	12
4. Neo Centrifuge.....	13
5. Genesis Centrifuge Original Edition.....	16
6. Genesis Centrifuge Special Edition.....	17
7. Genesis Centrifuge Original & Special Ed.....	20



“Bench-Top” Centrifuge with Strong Durability and Smart Functions

Max Capacity of 400ml & 4,000rpm for Clinic & Lab Operations



Smart Functions



10 Protocols



Soft-Spin Key



Comfort Use



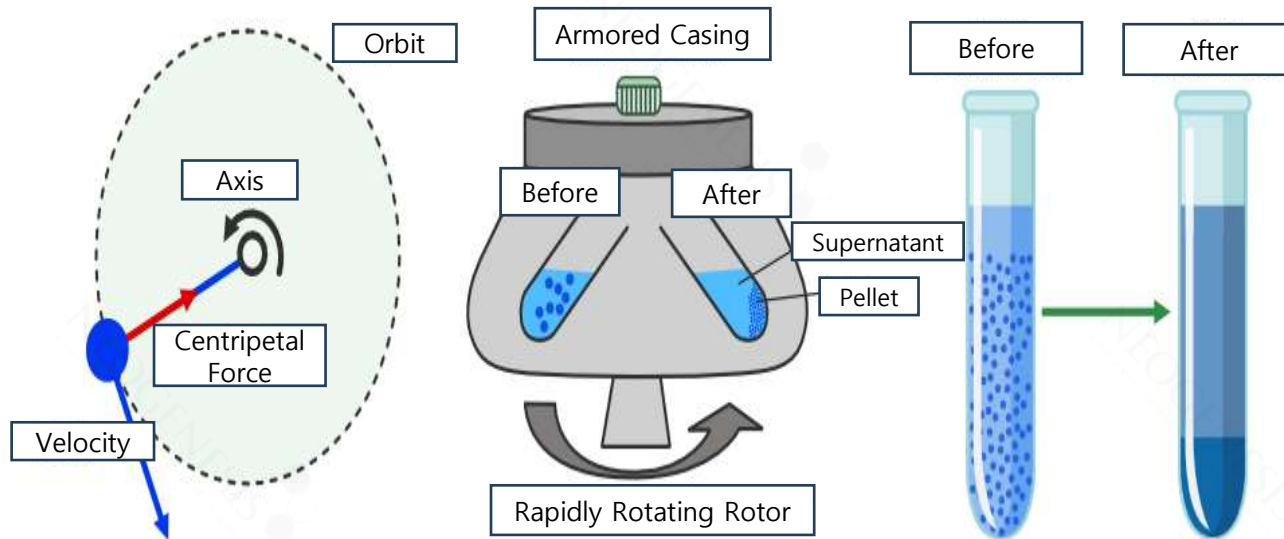
Biosafety Lv. 2

Separates Substances into Layers Based on Their Density

Lighter Particles Stay at the Top & Heavier Particles Go Down Under Centrifugal Force

Sedimentation Principle

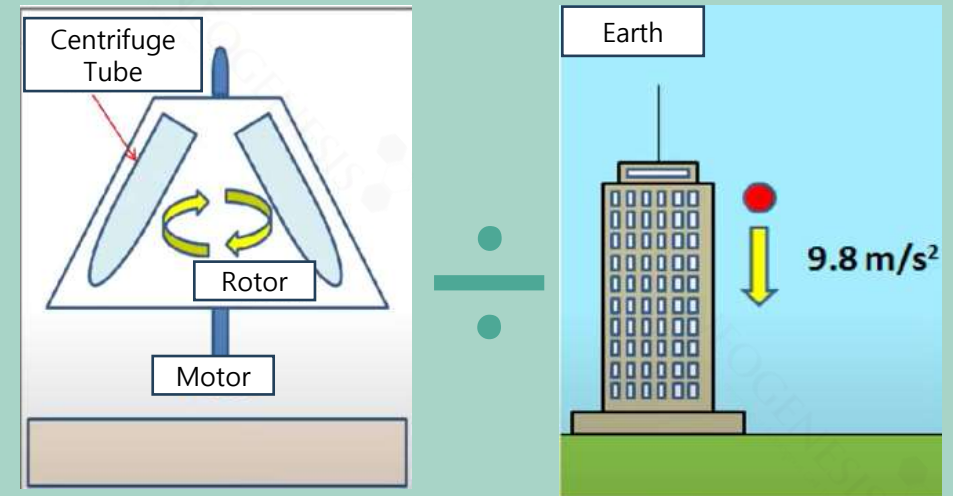
Particles of different sizes will settle at different rates, with the largest particles settling first.



The centrifugation technique operates on the principle that, through rapid spinning, **denser particles in a mixture are forced to settle at the bottom, while lighter particles remain at the top**. This method employs **centrifugal force** to achieve the separation of particles or mixtures from a solution.

Relative Centrifugal Force (RCF)

The amount of force applied when using a centrifuge.



$$RCF = \left(\frac{RPM}{1000} \right)^2 \times r \times 1.118 \Rightarrow RPM = \sqrt{\frac{RCF}{r \times 1.118}} \times 1000$$

6 Reasons You Should Choose NeoGenesis Centrifuge

Smart Functions Allow Delicate & Precise Results with Safety & Stability Guaranteed



Smart Functions

Precise Results



Stylish Design

Strong Durability



Safety Functions

Prevents Risks & Errors



Biosafety Level 2

EU RoHS Compliant



Low Noise Level

Pleasant Environment



Compatibility

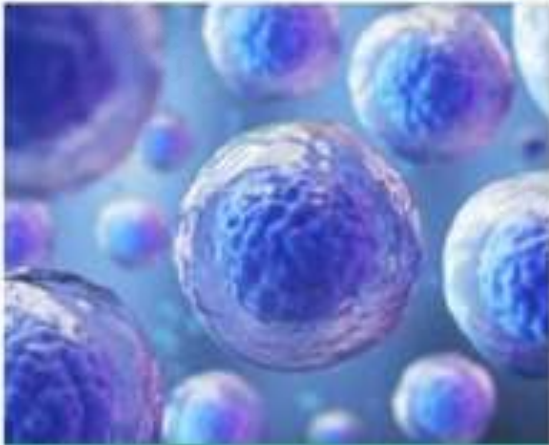
All Tube Sizes



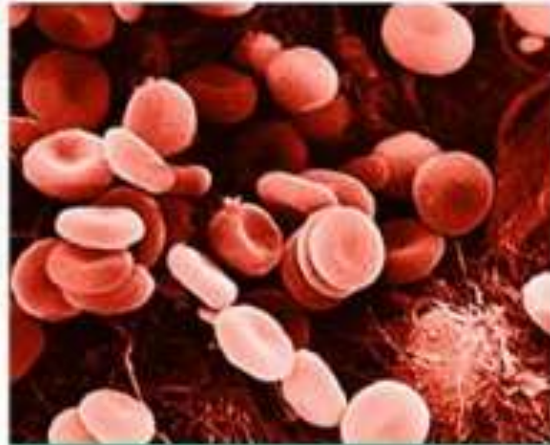
Strength: Various Applications

4,000 RPM / 2,700 RCF Optimized for Clinical Applications

Different Spec Rotors and Adaptors that Enable Compatibility with All Tube Sizes



Stem Cell / Lipid



Blood / Protein



Sperm / Urine



Virus / Chemical

Application of centrifugal force separates components within biological samples **according to mass**.

Centrifuges are also often used for **DNA and RNA analysis** through cell extraction, cultivation, and purification.

Strength: Design & Durability

Stylish, Strong Durability, Intuitive Buttons & Display

Weight Movable with Just One Person, Suitable for Bench-Top Use

Genesis Centrifuge



Intuitive Buttons & Display



Curved & Stylish Design



Weight:

23kg

Movable with Just One Person



Dimensions:

37x48x26cm

Suitable for Bench-Top Use

Neo Centrifuge



Weight:

17.5kg



Dimensions:

30x41x20cm



Soft Spin Mode for Precise Results of Delicate Samples

10 Programmable, Personalized Protocols for Your Convenience

RPM / RCF
Auto Adjustment Between RPM & RCF
Select unit of measurement to needs

SOFT START STOP
Soft Spin & Separation Mode
Slow acc/dec for fine separation

TIME
Continuous Use + Configurable Timer
Continuous mode or adjust timer up to 99 minutes

PROG
10 Programmable Memory
Save frequently used protocols

Prevents Risks & Errors with Safety & Stability Guaranteed

Auto-Lid Control & Alarm for Imbalance, Over-Speed & Heat



Overheat, Noise & Lid Drop Prevention

Dual Air Circulation Function:
Heat and Noise are Blocked
As they pass through the lid



Auto-Lock & Emergency Door Open

- Automatic Open Upon Completion
- Door can be unlocked manually with Emergency Door-Lock Release Tool through the emergency opening hole (**as long as the instrument is completely stopped**)



Detects Imbalance & Overheat

Emergency Stop & Alarm Function

If the instrument shows the **error code** with beeping sound, press **[STOP] button** to stop beeping sound and press **[Enter] button** to release of the error status and make the instrument go to the default setting again.

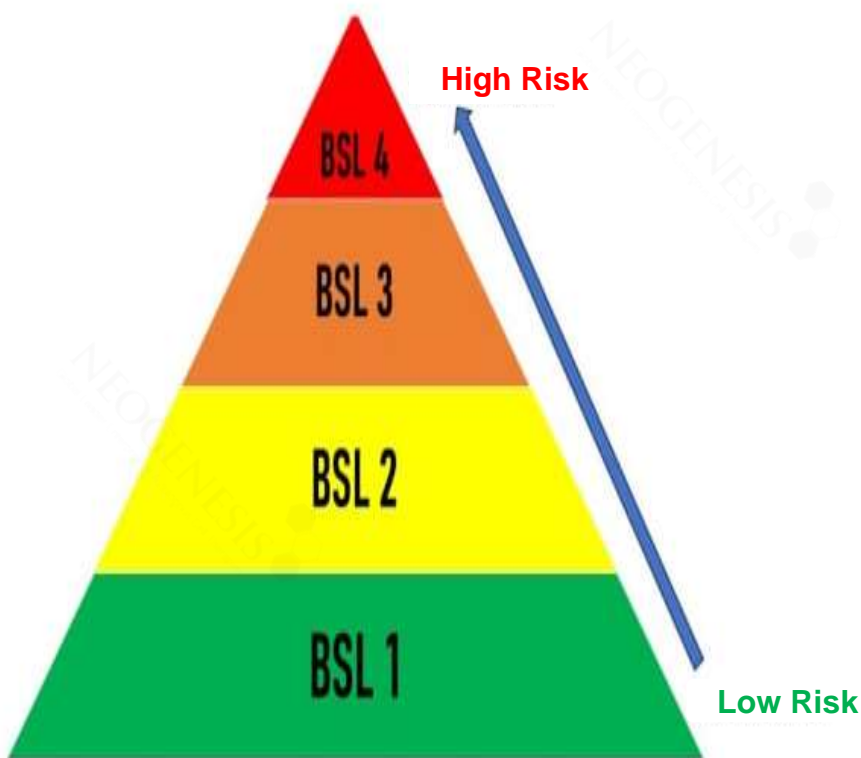
Error 1 or 9: RPM Sensor, **Error 2:** Door,
Error 3: Motor Overheating, **Error 4:** Low Voltage,
Error 5: High Voltage, **Error 6:** Over Speed,
Error 7: Software, **Error 8:** Imbalance

Strength: Biosafety Level 2

Aerosol-Tight Buckets & Rotors Comply with EU's RoHS

Fulfills All the Requirements for Standard Laboratory Equipment in WHO's BSL 2 Labs

World Health Organization Designates Laboratory Facilities Under Four Biosafety Levels (BSL)



What is RoHS?

Restriction of Hazardous Substances in Electrical and Electronic Equipment (RoHS) EU rules restrict the use of hazardous substances in electrical and electronic equipment to protect the environment and public health.



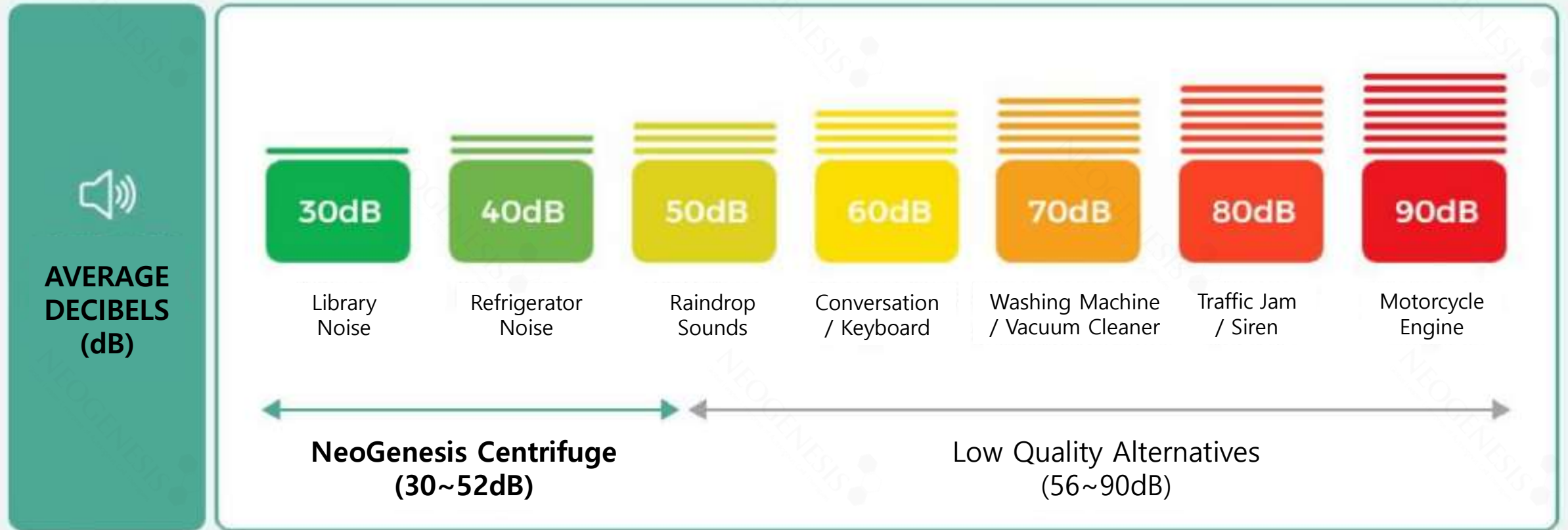
Requirements for Centrifuges in BSL 2 Labs

- Centrifuge vessels (aerosol-tight vessels required): decontamination after use required; as an alternative, sterile, single-use vessels may be used
- Aerosol-tight rotors
- Aerosol-tight caps that can be removed from the centrifuge for secure transport
- Use of vessels with high thermal, centrifugation, and chemical stability
- Imbalance sensors and emergency stop feature
- Detailed information in the operating manual about correct loading of the rotor
- Appropriate cleaning and disinfection protocols for rotors and rotor chambers provided by the manufacturer
- Clear manufacturer instructions for opening the centrifuge lid should power fail

Strength: Low Noise Level

Operates Below 52 Decibels for a Pleasant Environment





Low Quality Products Reach Up to 90dB, Making Continuous Use Impossible



※ Research shows that **exposure to noise over 80dB** or **continuous exposure to noise over 70dB** can be harmful to the human body.

NeoGenesis Centrifuge: The Best in the Market

Unbeatable Product Quality for a Significantly Less Price

Product Name	Genesis Centrifuge	Brand ‘H’	Brand ‘L’	Brand ‘D’
Product Image				
Size	37.5x48x26cm	41.5x55.4x29.7cm	49x38x27cm	25x31x23cm
Weight Without Rotor	23kg	25kg	23 kg	10kg
Maximum RPM/RCF	4,000 rpm / 2,774 xg	4,000 rpm / 2,987 xg	4,000 rpm / 2,600 xg	4,000 rpm / 1,780 xg
Maximum Capacity	400cc	400cc	200cc	120cc
Noise Level	≤52 dB	≤60 dB	≤60 dB	≤52 dB
Warranty	1 Year + Lifetime Maintenance	X	12 months	X

3 Models (1 NEO + 2 GENESIS) Based on Capacity



Neo (Original Edition)



Max. **90cc** (10cc Rotor Set)
Weight: **17.5kg**
Dimensions: **30x41x20cm**

Genesis (Original Edition)



Max. **400cc** (15cc Rotor Set)
Weight: **23kg**
Dimensions: **37x48x26cm**

Genesis (Special Edition)



Max. **400cc** (30cc Rotor Set)
Weight: **23kg**
Dimensions: **37x48x26cm**

※ Genesis Original & Special Edition are **the same device**,
equipped with different rotor sets for use of different sized tubes.



Fixed-Angle 10cc Rotor & Bucket Optimized for Neo PRP

Compatible with Universal 15cc Conical Tubes, 3/4/5cc Adaptors Sold Separately



Manual Included



Fixed- Angle Rotor
GRA-15-6

10/15cc x 6
Angle: 45°
Hole Diameter: 18mm
Max Height for Tube Fit: 130mm



Conical Tube
15cc

=



NEO PRP
10cc



Good for Routine Low Speed Centrifugation

For the Separation of Biological Samples of Blood, Urine, Cells, etc.



Max. 4,000 rpm



Program memory for up to 10 programs



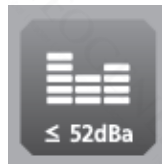
Max. 2,075 xg



Automatic recognition and alarms for imbalance, over-speed, and over-heat



Unique airflow damping and elimination of sample heating



Low noise level: ≤52 dB,
robust construction with minimized heat and noise transmission



Time controls for timed runs up to 99 min. or continuous operation



Time Control, RPM/RCF Conversion, Imbalance Cutout

Safety Lid Lock, Lid Drop Protection, Auto Door Release at Completion, and More

Max. RPM/RCF	4,000 / 2,075 xg
Max. Capacity	90cc (15cc x 6)
Time Control	Timed < 100 min. or continuous
Noise Level (dB)	≤52
Acc / Dec (sec)	≤20 / ≤25
Control Panel	Blue LCD Button Screen / Pop-up Buttons
Program Memory	10
Power Supply (V/Hz)	220V / 50~60Hz (110V Optional)
Power Requirement (VA)	140VA, Fuse: 6A
Dimension (W x L x H, mm)	296 x 412 x 206
Weight Without Rotor (kg)	17.5
RPM/RCF Conversion	Yes
Imbalance Cutout	Yes
Safety Lid Lock	Yes
Lid Drop Protection	Yes
Automatic Lid Release at Completion	Yes
CE Mark	Yes
Cat. No.	GZ-406

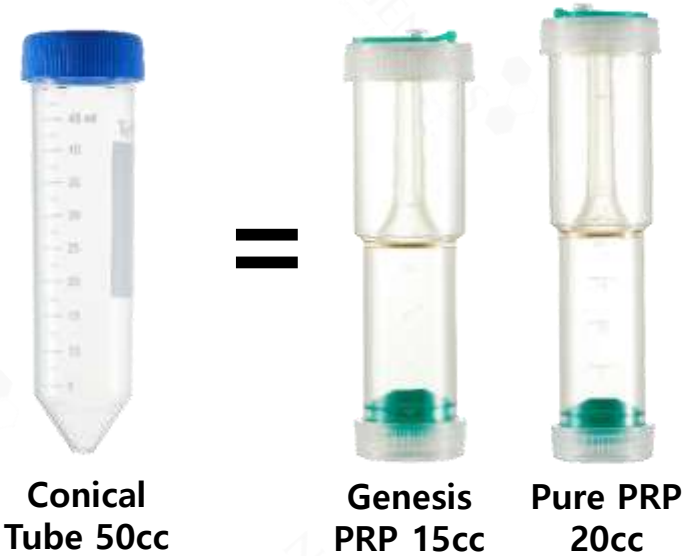


Optimized for Genesis (15cc) & Pure (20cc) PRP Kit

Compatible with Universal 50cc Conical Tubes and All Tube Sizes



Manual Included



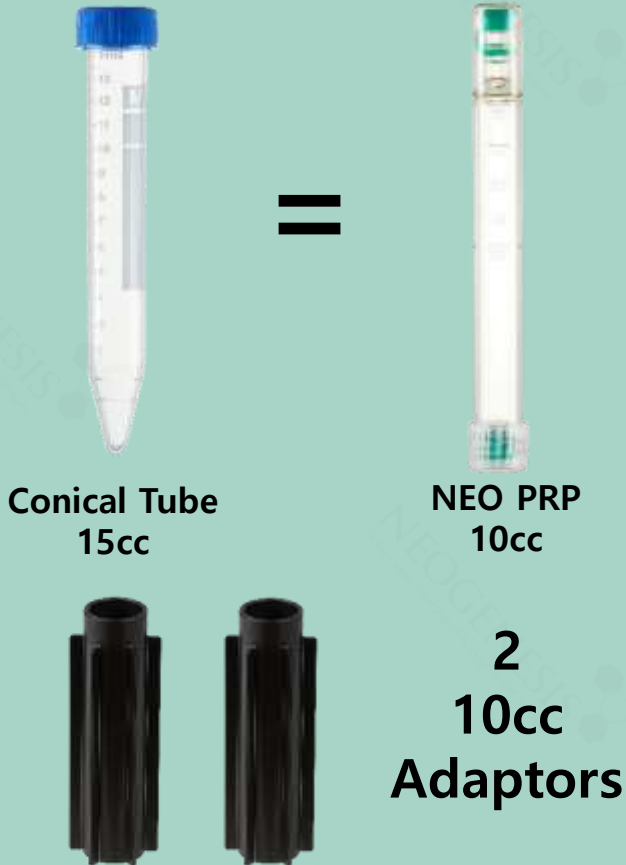
Conical Tube 50cc

Genesis PRP 15cc

Pure PRP 20cc



Swing-Out 15/20cc Rotor Set



Conical Tube 15cc

NEO PRP 10cc

2 10cc Adaptors

Optimized for Cure (30cc) & Omni (60cc) PRP Kit

Specially Designed Centrifuge for Extra-Large NeoGenesis PRP Kits



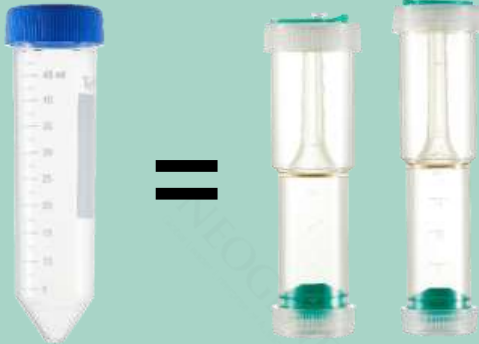
Manual Included



Cure PRP 30cc
Omni PRP 60cc



Swing-Out
30/60cc
Rotor Set



Conical Tube 50cc
Genesis Pure PRP 15cc 20cc



Two 15/20cc
Adaptors



Conical Tube 15cc
NEO PRP 10cc



Two 10cc
Adaptors

Used for General Laboratory Applications

Clinical Applications of PRP, PRF, Lipid Cell Separation, and Stem Cell Isolation



Max. 4,000 rpm



Program memory for up to 10 programs



Max. 2,700 xg



Automatic recognition and alarms for imbalance, over-speed, and over-heat



- Unique airflow damping and elimination of sample heating
- Bio-Caps Buckets aerosol-tight buckets prevent contamination and ensure safety



- Low noise level: ≤52 dB, double layered door construction (ABS/Steel), decreases heat and noise transmission



- Soft-spin key for gentle acceleration and deceleration
- Time controls for timed runs up to 99 min. or continuous operation



Blue LCD Button Screen with Pop-Up Buttons

Equipped with All the Functions and Safety Features that You Need

Max. RPM/RCF	Fixed angle	4,000 / 2,700 xg
	Swing out	4,000 / 2,774 xg
Max. Capacity	Fixed angle	90cc (15cc x 6)
	Swing out	400 cc (100c x 4)
Time Control		Timed < 100 min. or continuous
Noise Level (dB)		≤52
Acc/Dec (sec)		≤20 / ≤25 (Soft-Spin)
Control Panel		Blue LCD Button Screen / Pop-up Buttons
Program Memory		10
Power Supply (V/Hz)		220V / 50~60Hz (110V Optional)
Power Requirement (VA)		340VA, Fuse: 6A
Dimension (W x L x H, mm)		375 x 480 x 260
Weight Without Rotor (kg)		19.5
RPM/RCF Conversion		Yes
Imbalance Cutout		Yes
Safety Lid Lock		Yes
Lid Drop Protection		Yes
Automatic Lid Release at Completion		Yes
CE Mark		Yes
Cat. No.		GZ-416



Comparison: GENESIS Centrifuge Original & Special Edition

“Swing-Type” for General Usage

Compatible with All Tube Sizes, Maximum Capacity 400cc (100cc x 4)

	Original Edition	Special Edition
Rotor Installed	 <p>Swing-Out 15cc Rotor Set</p> <p>15cc Rotor</p> <p>15/20cc Bucket (4ea)</p> <p>10cc Adaptor (2ea)</p>	 <p>Swing-Out 30cc Rotor Set</p> <p>30cc Rotor</p> <p>30/60cc Bucket (4ea)</p> <p>15/20cc Adaptor (2ea)</p> <p>10cc Adaptor (2ea)</p>
	 <p>Genesis Original Edition</p> <p>Genesis PRP (15cc)</p> <p>Pure PRP (20cc)</p> <p>50cc Conical Tube</p>	 <p>Genesis – Special Edition</p> <p>Specially designed centrifuge for extra-large NeoGenesis PRP Kits</p> <p>Cure PRP (30cc)</p> <p>Omni PRP (60cc)</p>

Compatible Rotors Sold Separately

Neo Centrifuge



Fixed-angle rotor
Rotor Cat. No. GRA-15-12

Genesis Centrifuge



Fixed-angle rotor
GRA-S-15-16



Swing out rotor
GRS-S-15-6



Swing out rotor
GRS-S-100-4



Swing out rotor
GRS-S-mw-2

Work Smarter with NeoGenesis Centrifuge Series



Address: #307 Think Factory Bldg. C, 150 Yeongdeungpo-ro,
Yeongdeungpo-gu, Seoul, South Korea (07292)
Tel: +82-2-583-1348 **Fax:** +82-2-2038-0848
Email: info@neogenesis.co.kr
Website: www.neogenesis.co.kr